



vane>>>t  
pickupboxx (English)

# Experience

## #nextlevel

# flexibility

Go wherever you want: With its absolute leightweight of only 430 kg, our extremely versatile pickup cabin makes every off-road adventure possible. Manufactured for eternity, the elegant multi-talent fits on various pickup vehicles and impresses with absolutely high-quality equipment down to the smallest detail!

## pickupboxx

### The flexible leightweight

Overview

» **Pages 02 - 03**

Dimensions & equipment

» **Pages 06 - 07**

Add-ons

» **Pages 10 - 11**

#nextlevel features

» **Pages 12 - 13**

Interior

» **Pages 14 - 19**



The flexible lightweight

# pickupboxx

- Fits all: compatible with almost all common pickup vehicles on the market
- Weighs nothing: absolute lightweight of only 430 kg (fully constructed!)
- Drives everywhere: first-class driving experience on roads and off-road terrain
- Looks classy: unique, clean room concept with lateral panorama window
- Lasts forever: high-quality construction using durable premium materials



# vane»xt



#nnextlevel

#pickupboxx

# #nextlevel cabin

## Dimensions & equipment

### Dimensions

Outer dimensions:	3690mm x 2090mm x 2090mm (l x h x w)
Entrance door:	550mm x 1800mm (w x h)
Panorama window flap:	1200mm x 750mm (w x h)
Alcove bed:	1850mm x 1400mm (l x w)
2nd bed in seating area:	1900mm x 800mm (l x w)
Sitting area driver's side:	800mm x 420mm (w x d)
Sitting area passenger's side:	1500mm x 420mm (w x d)

### Material

High quality manufacturing using 29mm GRP sandwich panels with fiberplast inserts for extra stability and everlasting durability. The cabin frame consists of bonded aluminum corner angle profiles.

### Compatibility

The vanexxt pickupboxx is compatible with almost all common pickup vehicles, e.g. with:

Isuzu D-Max, Toyota Hilux, Fiat Fullback, Ford Ranger, Ford F150, Nissan Navara, Volkswagen Amarok, Mercedes X-Klasse, Renault Alaskan, Mitsubishi L200, Dodge RAM 1500

### Equipment

- » 2kW diesel heater with integrated 10 l diesel tank (possible filling from outside)
- » 100Ah lithium ion battery
- » 180Wp solar power system
- » 3 side windows; black tinted polyacrylic (700mm x 400mm)
- » 1 large, very flat skylight (700mm x 500mm), adds only 7cm in height
- » Bluetooth-controlled LED lighting concept
- » Outdoor shower adapter
- » Rear ladder, optionally extendable with access ladder (see add-ons)
- » Stainless steel lifting adapter for the jacks at the corners of the cabin
- » High-quality powder coating of all aluminum and stainless steel components
- » 3-point bar lock in the entrance door and panorama window



**EUR 38.750\***

base price

**+ add-ons**

(see page 10)

\*Price gross incl. 19 % VAT



**#flexible**



**#practical**

# Perfect addition

## More add-ons, more flexibility

### Rear rack

EUR 1.245,00

- » For sand plates, fuel tanks, water tanks etc.
- » Weighs only 11 kg (without bike carrier), 90° swiveling
- » Completely flexible structure thanks to airline rails

### Bike carrier for rear rack

EUR 408,00

- » Load capacity of up to 60 kg
- » Suitable for up to 3 bicycles (including at least 1 children's bike)
- » Completely dismantlable by 2 ball lock bolts

### Access ladder

EUR 256,00

- » Suspension below the entrance door; attachable to rear ladder for transportation

**Dark interior foiling** (standard foiling is always white)

EUR 1.660,00

**Fixed awning**

EUR 1.480,00

All prices gross incl. 19 % VAT



Standard rear ladder and optional swiveling rear rack



Bike carrier for rear rack for up to 3 bikes



Dark interior foiling for a particularly refined look

# #nextlevel features

## Live flexibly

Thanks to a clean and elegant furniture concept with panorama window, sleeping space for up to 3 people and plenty of storage space, the pickupboxx provides an unexpectedly large sense of space.

## Travel flexibly

Thanks to the standard solar system, countless mounting options, kitchenette and outdoor shower adapter you are completely flexible and self-sufficient on the road.

## Stay flexibly

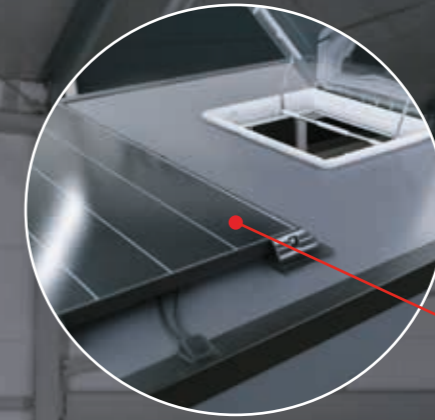
Stay wherever you want! With the help of the 4 lifting jacks, the pickupboxx can easily be lowered to floor level in the shortest time.

## Drive flexibly

Let's hit the road! With its lightweight of only 430 kg the pickupboxx is drivable with a class B driver's license and flexibly usable for every adventure on the road of off-road!

## Change flexibly

The compatibility with almost all common pickup vehicles ensures an extremely versatile and unique use in various markets.







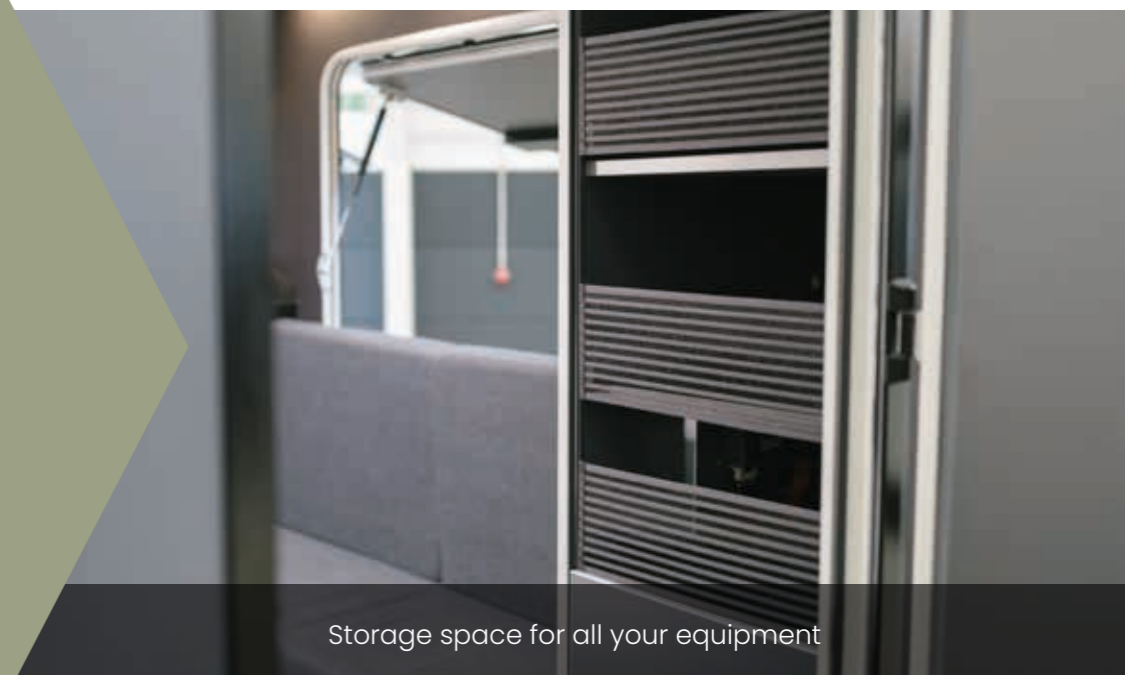
Sleeping space for 3 people thanks to double bed and converted sitting area



Dimmable LED lighting concept with Bluetooth-control and switch

## Flexible cabin made for eternity

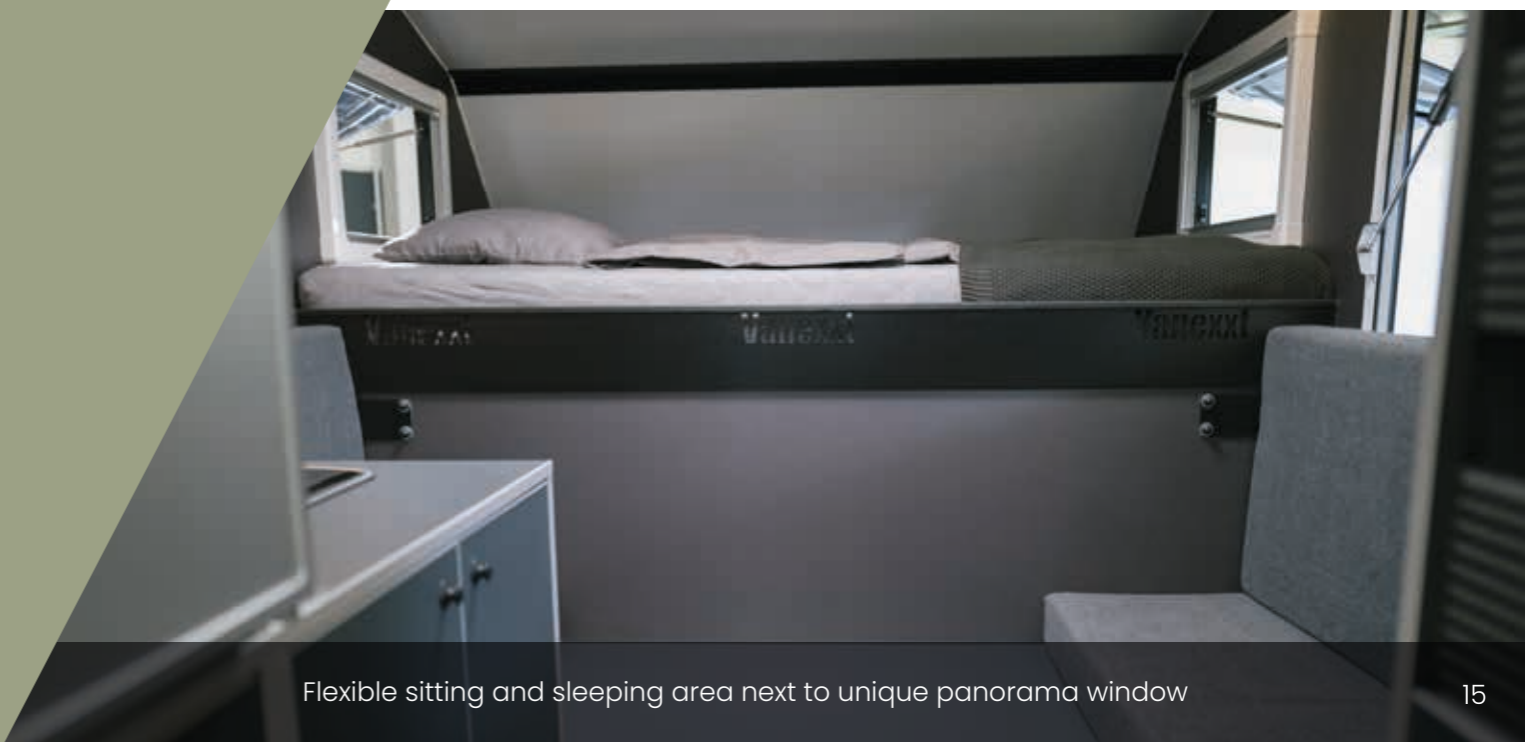
Everything is possible: the vanexxt pickupboxx combines unique compatibility with almost all common pickup vehicles with an unexpectedly large room concept and a lightweight of only 430 kg. The home on wheels is absolutely off-road capable and impresses with lots of storage space, a timeless look, few frills and unbeatable durability thanks to the use of the highest quality, robust materials.



Storage space for all your equipment



Kitchenette with refrigerator



Flexible sitting and sleeping area next to unique panorama window



2-burner hob with integrated sink



Compressor refrigerator with 180° opening angle



16 l fresh and waste water tank



Extra large kitchen block

## Interior equipment

- » Large kitchen block (720mm x 695mm x 1000mm) and top cabinets with additional storage space (1198mm x 300mm x 250mm)
- » 12V compressor refrigerator (48 l capacity) with freezer compartment and 180° opening angle
- » 2-burner hob with integrated sink and glass cover
- » Sliding and lowering table with sitting area, which can be converted into a 3rd bed
- » 16 l fresh water and waste water tank
- » Flexible mounting options for toilet, camping chairs, etc. thanks to airline rails running all around the cabin
- » LED spotlights and strip light for indirect lighting, controllable via Bluetooth, switch and cell phone
- » 2 independent lamps incl. USB connection in the alcove, which can be controlled by touch at any time
- » Exterior light above the entrance door



**Stay flexible  
with your  
ultralight  
offroad  
home.**

[www.vanexxt.de](http://www.vanexxt.de)

[www.vanexxt.de](http://www.vanexxt.de) | [info@vanexxt.de](mailto:info@vanexxt.de)



**pickupboxx**  
(English)  
[www.vanexxt.de](http://www.vanexxt.de)

[www.vanexxt.de](http://www.vanexxt.de)